

## MinecraftEdu Teacher Cheat Sheet

Some of the most important teacher actions and how to perform them:

To do any of these actions, **press P** to access the teacher menu.

### Freezing all players/ Muting all players

**Freeze:** Press p, go to the 4<sup>th</sup> tab called “Personal,” and check the little boots on the bottom right.

**Mute:** So players can’t use chat, check the chat box under the boots.



### Give items to players

Press p, go to the 6<sup>th</sup> tab called “Give,” start typing the name of the item you want to give (it will autofill), enter amount, select the player you want to give items to, and hit Give Player. You can also give items to all players by hitting Give to All.



## Players can teleport to spawn point or surface

Let players teleport back to the spawn point (where they first entered the map) or to the surface (if they are stuck underground).

Press p, go to the 3<sup>rd</sup> tab called “World Settings,” and check the box Allow Student Surfacing and/or Allow Student Respawning.

Now when students press the letter “m” they will be able to click a button to teleport themselves.



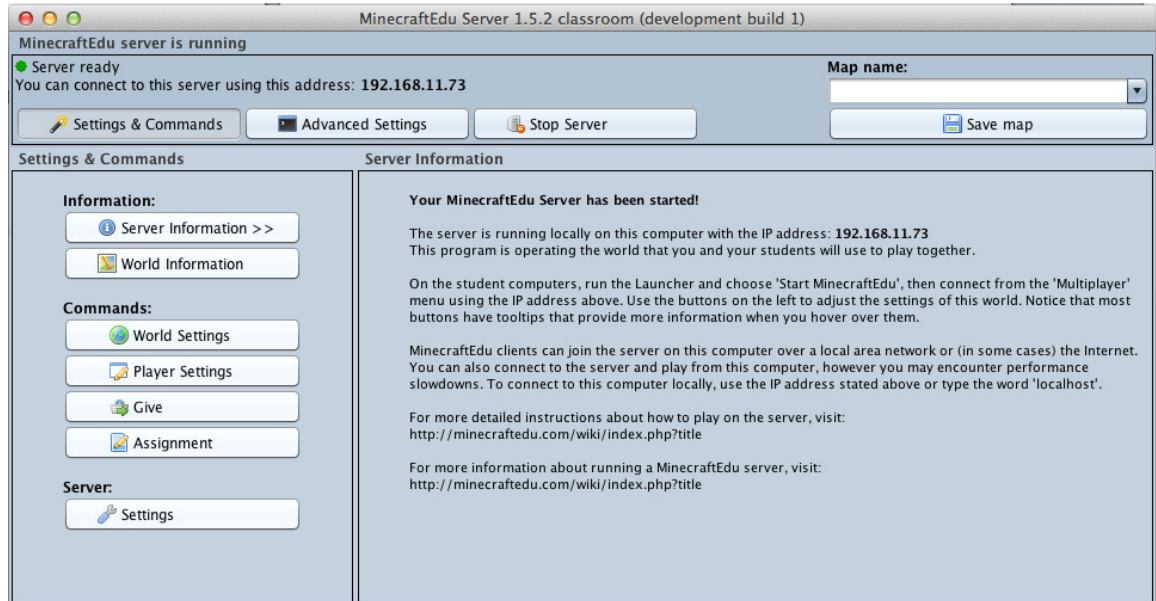
## Teleport yourself to players/Teleport players to you

Press p, and go to the 4<sup>th</sup> tab called “Personal.” Type the student’s name in the text field and two buttons will come up after the students name “Teleport self to student” and “Teleport student to self.”



## Save the map when you're done!

1. Students all disconnect by pressing "esc" and then selecting "disconnect."  
They can then quit the game.
2. Go to the server tool



3. Give the map a name in the upper right corner and hit Save Map.
4. Then hit Stop Server.
5. Next time you run the server you can select your saved map.